

Black Magic

Ultimate Sportfishing

GREAT BARRIER REEF FNQ - PORT DOUGLAS TO LIZARD ISLAND



Bespoke Sportfishing

FNSF

FARNORTHSPORTSFISHING.COM

Experience The Very Best

Black Magic is the newest addition to FNSF's five-vessel fleet. The 40 foot custom-built game boat provides a great platform for heavy and light tackle, saltwater fly and reef fishing. Our Skipper has a wealth of experience and holds multiple IGFA world records, so whether you're out for recreation or a record of your own, you're in good hands.



The fishing North of Port Douglas on Queensland's Great Barrier Reef is like nowhere else on the planet. Whether your passion is popping, jigging, trolling, fly or reef fishing, *Black Magic* has it covered. Expect Giant and Juvenile Black Marlin action, Sailfish, Tuna, Giant Trevally, Spanish Mackerel, Red Emperor and many other trophy species. FNSF only use top-of-the-range equipment from custom built rods to the very best in Shimano and Penn reels.





Black Magic

Choose between a bespoke day charter or an extended voyage out on the Reef for two or three nights. Black Magic can also be combined with FNSF's own luxury 70 foot mothership *Blue Martini* for tournament fishing or your own bespoke adventure. With its own private chef, on-board hostess and the accompanying professionally guided 20 foot centre consoles, the Blue Martini mothership package makes for an unforgettable on the water experience.



**Bespoke sportsfishing
with a fleet like no other**



Blue Martini

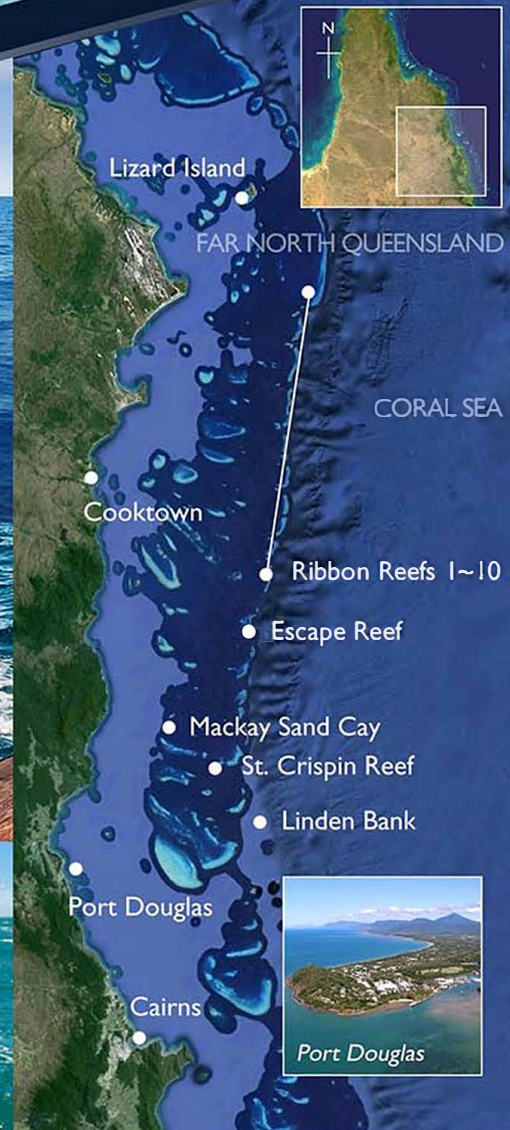


Rich Fishing Grounds

PORT DOUGLAS NORTH TO LIZARD ISLAND



Black Magic operates out of Port Douglas, gateway to the world renowned Great Barrier Reef where anglers can enjoy an unparalleled Sportfishing experience. With its twin cabin layout, *Black Magic* provides for guests ~ with comfortable accommodation and a perfect platform to traverse the fish rich waters from Port Douglas up to the remote Ribbon Reefs and North to Lizard Island.



FNSF can tailor-make a sport fishing experience on *Black Magic* to any group's requirements whether it's fishing with friends, colleagues or family. Day charters cater to a maximum of six guests with a four-guest maximum for extended charters.

Prices start at \$2,600 per day for a full day charter.

Bespoke Sportfishing

FNSF

FARNORTHSPORTSFISHING.COM

BOOKINGS +61 499 105 880 - FARNORTHSPORTSFISHING.COM - INFO@FARNORTHSPORTSFISHING.COM